

Company profile

www.apq-electric.com



No.501, Pyay Road, Kamaryut Township,
Yangon, Myanmar.

Tel : +95(01)2304270~2, Fax : +95(01)537176,

Email : contact@apq-electric.com, www.apq-electric.com

CONTENTS



COMPANY BRIEFING

1

OUR MISSION

2

OUR VISION

2

ORGANIZATION

2

OUR SERVICE

3

OUR PRODUCTS

3

PROJECT REFERENCES

12

ACTIVITIES

15



Authorized Distributor



COMPANY BRIEFING

Asia Power Quality Electric Co., Ltd. was established in 2014, located in Yangon, Myanmar. We are importing and distributing of High Voltage and Medium Voltage Power Products & Systems, LV Power Products & Systems and Industrial Automation Products manufactured by ABB. We are entrusted as an official partner to distribute ABB Products.

We could firstly import the original ABB products such as 245kV Gas Circuit Breakers, 145kV Gas Circuit Breakers and so on to Myanma Electric Power Enterprise under Ministry of Electric Power and we also pioneered ABB 72.5kV Hybrid Gas-insulated Switchgear as well as the first time of ABB to Myanmar.

We design, supply, and service various ABB's products and systems for power transmission and distribution fields. And also arranging the projects as turnkey, Installation, supervision, testing and commissioning with efficient and effective professional engineering teams.

In order to keep in touch and build deeper relationship with our valuable customers, we will open ABB's Products showroom at No. 501/503, Pyay Road, Kamaryut Township, Yangon, Myanmar within September, 2015.



Head Office & Showroom
No. 501/503, Pyay Road, Kamaryut Township, Yangon



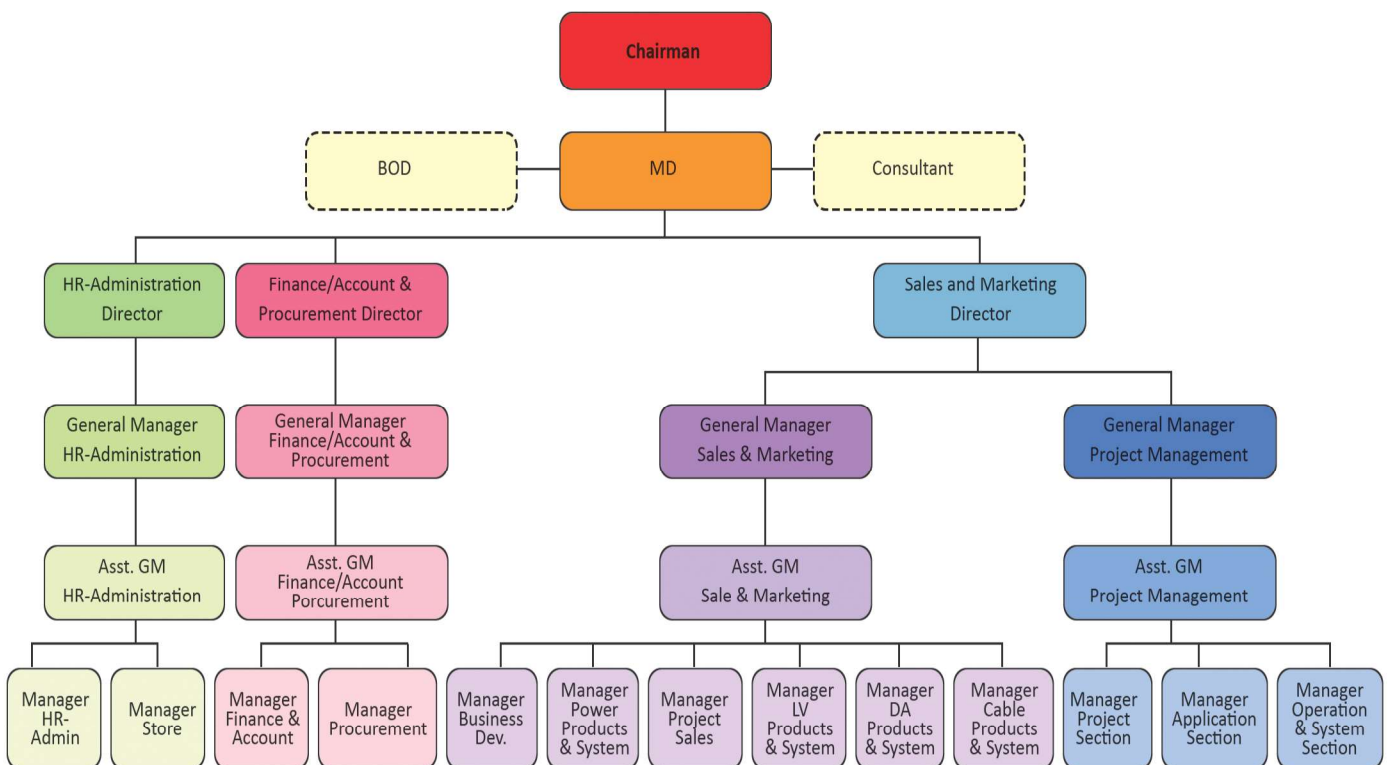
OUR MISSION

Asia Power Quality electric Co., Ltd. is committed to providing the highest quality products, competitively price with service exceeding our customer expectations.

OUR VISION

Our country require more electricity. There will be a continuing need products and services to harness its use. Our company will be best in class as an authorized distributor, provide reliable service including corporate social responsibility.

ORGANIZATION



OUR PRODUCTS

❖ Low Voltage Products & Systems

- Low Voltage Circuit Breakers
- Switches Control Products
- Wiring Accessories
- Enclosures
- Cable Systems

❖ Power Products & Systems

- High Voltage & Medium Voltage Switchgears
- Instrument Transformers
- Capacitors & Reactors
- Power & Distribution Transformers

❖ Industrial Automation Products

- Motors and Drives
- PLCs, HMIs, Software
- Active Voltage Conditioner (Stabilizers)
- Uninterruptible Power Supply Systems (UPS)

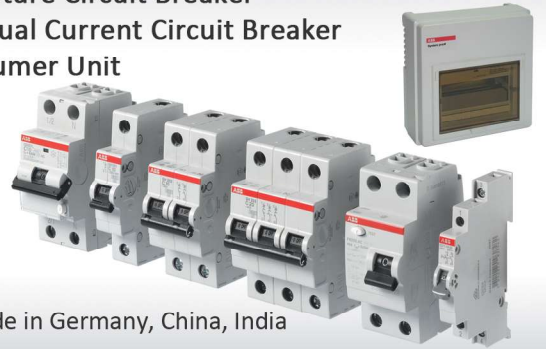
ABB LOW VOLTAGE PRODUCTS & SYSTEMS

Switches & Sockets



Made in Germany, China

Miniature Circuit Breaker Residual Current Circuit Breaker Consumer Unit



Made in Germany, China, India

Moulded-case Circuit Breaker



Made in Italy

Air Circuit Breaker (Emax)



Made in Italy

Auto Transfer Switch



Made in Finland

Change Over Switch



Made in Finland

Soft Starter



Made in Sweden, China

Capacitor



Made in Thailand

Power Factor Controller



Made in Belgium

ABB LOW VOLTAGE PRODUCTS & SYSTEMS

HRC Fuse Link & Fuse base



Made in Bulgaria, Hungary

Magnetic Contactor & Thermal Overload Relay



Made in China

Electronic Products & Relays



Made in Germany, China

Low Voltage Switch Board



Made in Italy

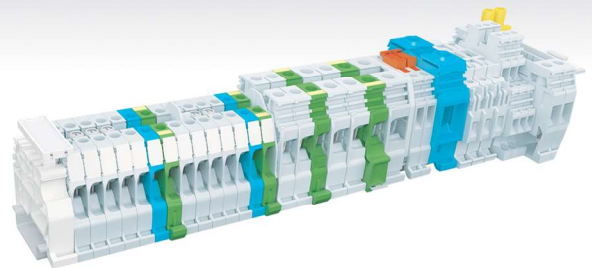
Panel Accessories



Control Fuse



Digital Multifunctional Meter



Terminal Blocks



Control Components

Made in France, Italy, China

Medium Voltage Products

SF₆ Gas Circuit Breaker



- OHB**
- Outdoor
 - SF6 Circuit Breaker
 - Up to 40.5 kV, 2500 A, 31.5 kA

Control and Relay Panel



Disconnecting Switch



- NRB**
- Outdoor
 - Double Break Disconnectors
 - Energy efficient, reliable and maintenance free
 - 12-72.5 kV, Up to 2500 A, 31.5 kA

Surge Arrester



- System voltages (Um) 24-170 kV
- Rated voltages (Ur) 18-144 kV
- Nominal discharge current (IEC) 10 kApeak

Outdoor Current Transformer



- TPO 7**
- Outdoor
 - up to 40.5 kV

Outdoor Voltage Transformer



- TJ07**
- Outdoor
 - 24-40.5 kV

Medium Voltage Primary Switchgear



Air Insulated Primary Switchgear-UniGear

- Type ZS1, Up to 4000 A/50 kA at 12 kV
- Type ZS2 36 kV panel for 2500 A / 31.5 kA



Gas-insulated Primary Switchgear-UniGear

- Type ZX0 (...24 kV, ...1250 A, ...25 kA)
- Type ZX1.2 (...36 kV, ...2500 A, ...31.5 kA)
- Type ZX2 (...36 kV, ...4000 A, ...40 kA) Single or Double Busbar

Medium Voltage Secondary Switchgear



Gas-insulated Secondary Switchgear-SafePlus

- Up to 36 kV, 21 kA for 3 sec



Gas-insulated Ring Main Unit-SafeLink

- Up to 12 kV, 630 A, 21 kA for 3 sec

Medium Voltage Dry Type Distribution Transformer



Vacuum Cast Coil dry type transformers

- Range from 50 kVA up to 30 MVA
- Operating voltages up to 52 kV.



RESIBLOC® dry type transformers

- Power rating (AN) 250 kVA to 40,000 kVA
- Rated voltage up to 45 kV

Medium Voltage Products

Protection Relay



Indoor Current Transformer

- Up to 40.5kV,100kA
- Rated primary current : Up to 2500A
- Rated secondary current : 5A , 1A



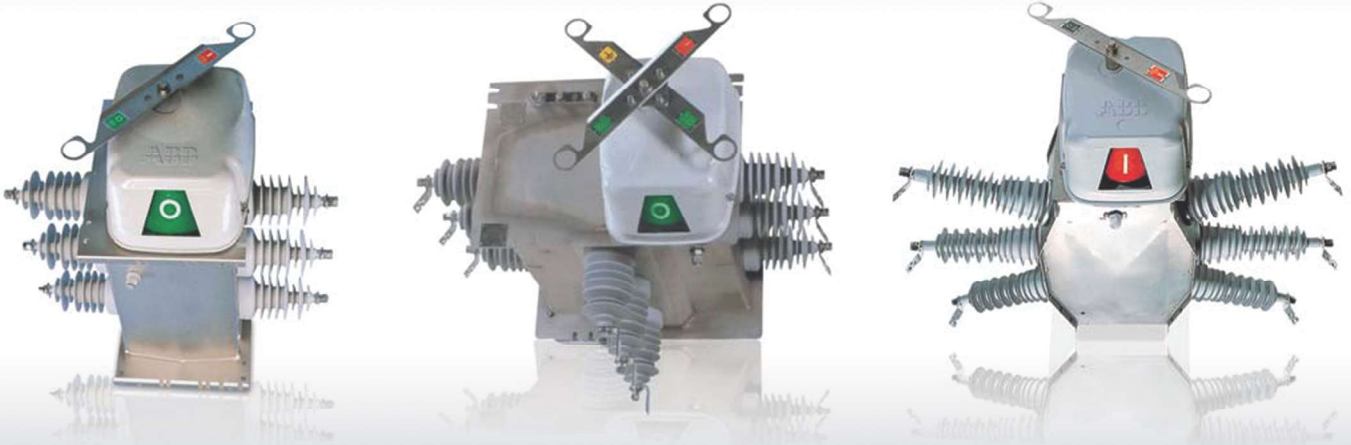
Indoor Voltage Transformer

- Single-pole insulated PT
- Up to 36kV



Sectos Pole Mounted SF6 Load Break Switch(Sectionalizer)

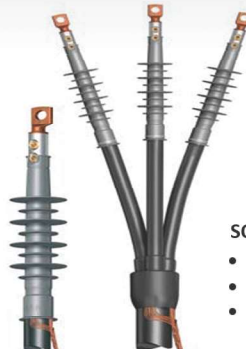
- Up to 36kV
- Rated current : 630A



Cable Termination Kit



- SOT**
- Single Core, Three Core
 - 12-36 kV
 - Indoor



- SOT**
- Single Core, Three Core
 - 12-36 kV
 - Outdoor

Screened separable connectors



High Voltage Products

SF₆ Gas Circuit Breaker



- LTB**
- Outdoor/Indoor
 - SF₆ Auto-Puffer™ interrupter
 - Up to 800 kV, 4000 A, 50 kA

SF₆ Gas Circuit Breaker



- EDF**
- Outdoor
 - SF₆ Auto-Puffer™ interrupter
 - 36-84 kV, 2500 A, 31.5 kA

Disconnecting Switch



- Horizontal center break disconnecter**
- Upto 245 kV, 3150 A, 50 kA

Surge Arrester



- PEXLIMQ**
- System voltages (Um) 52 - 420 kV
 - Rated voltages (Ur) 42 - 360 kV
 - Nominal discharge current (IEC) 10 kApeak

Current Transformer



- IMB 36-765**
- Outdoor
 - 36-800 kV, Up to 4000 A
 - Up to 63 kA/1 sec

Inductive Voltage Transformer



- EMF 52-170**
- Outdoor
 - 52-170 kV

Capacitive Voltage Transformer



- CPB 72-800**
- Outdoor
 - 72-765 kV

Gas-insulated switchgear (GIS)



GIS ELK-14 C
 • Up to 253 kV
 • Up to 50kA



GIS ELK-04 C
 • Up to 145 kV
 • Up to 40kA

Hybrid Gas-insulated switchgear (HGIS)



HGIS PASS M0
 • Up to 170 kV
 • Up to 40kA

Power Transformers



• Up to 1,500 MVA, 1000 kV
 • Load tap changers available
 • Single Phase or three phase

Capacitors & Reactors



HV Shunt Capacitor Bank
 • 35-765 kV
 • 0.1-600 Mvar



HV Shunt Reactor
 • Up to 800 kV
 • Up to 300 Mvar

ABB INDUSTRIAL AUTOMATION PRODUCTS

Motors



Single speed electric motors (single and three-phase)

- 2, 4, 6 and 8 poles
- Rated output PN from 0.12 kW to 1000 kW
- Rated voltage UN above 50 V up to 1 kV

Drives



Voltage and power range

- 3-phase, 380 to 480 V (0.75 to 355 kW)
- 3-phase, 200 to 240 V (0.75 to 75 kW)
- 1-phase, 200 to 240 V (50% de-rating)

Protection classes

- IP21 / UL Type 1: 0.75 - 355 kW
- IP54 / UL Type 12: 0.75 - 160 kW
- Identical ratings for IP54 and IP21

Medium voltage AC drives

- General purpose drives 0.25 to 7 MW
- Special purpose drives 2 to 100 MW

Low voltage AC and DC drives

- Micro drives 0.18 to 4 kW
- Machinery drives 0.18 to 560 kW
- General purpose drives 0.75 to 355 kW
- Motion control products 1 to 33 kW

Industrial drives

- Low voltage AC 0.55 to 5600 kW
- Low voltage DC 7.5 kW to 4.8 MW
- Industrial specific drives 0.37 to 400 kW
- Drives for HVAC
- Drives for water

Active Voltage Conditioner (Stabilizers)



PCS 100VAC
• 125 kVA-20 MVA

Uninterruptible Power Supply Systems (UPS)



PowerWave 33 (60-500 kW)

- Output Power Factor : 1.0
- Overall Efficiency : Up to 96%
- Input Voltage Tolerance : For Load < 100% (-23%,+15%)
- Parallel Configuration : Up to 10 units

PLCs, HMIs, Software



AC500

ABB's powerful flagship PLC offering a wide range of performance levels and scalability within a single, simple concept where most competitors require multiple product ranges to deliver similar functionality. Web server integrated and IEC 60870-5-104 remote control protocol for all Ethernet versions.

Control panels

Our control panels offer a wide range of touchscreen graphical displays from 3.5" up to 15". They are provided with a user friendly configuration software that enables tailor made customized HMI solutions. Rich sets of graphical symbols and the relevant drivers for ABB automation products are provided. Control panels for visualization of AC500 webserver applications are available as well. ABB Robotics IRC5 controller driver included in Panel Builder 600 for direct connection.



DigiVis 500

DigiVis 500 software is a simple and easily accessible solution in the development of supervision applications. It offers all the functions that are essential to a secure environment, its functional reliability and dual-display mode will simplify all your supervision operations, keeping interruptions to a minimum.

PROJECT REFERENCES

Myauk Pyin Substation, Mandalay Division



230/33/11 kV, 100MVA, Three Phase Transformer Installation in 2017



Hmone Ywar Substation, Saging Division



230/33/11 kV, 100MVA, Three Phase Transformer Installation in 2017

PROJECT REFERENCES



245kV Gas Circuit Breaker
@ Pynmanar Substation



245kV, Gas Circuit Breaker @ Shwe Taung Substation



245 KV Gas Circuit Breaker
(MEPE)



145kV Gas Circuit Breaker
@ Thar Si Substation



245kV, Gas Circuit Breaker @ Chauk Substation



145kV Gas Circuit Breaker
@ Magway Substation



Junction City
from Shwe Taung Development Co., Ltd. 66 kV & 11 kV GIS Substation

PROJECT REFERENCES

SUBSTATION (TURN KEY PROJECT)

Hlaing Bwe Substation in Kayin State



66/33kV, 10MVA Substation(Under Construction)
65(T)/ESE/2014-2015

Late Tho Substation in Kayin State



33/11kV, 5MVA Substation(Under Construction)
65(T)/ESE/2015-2016



Myaing Gyi Ngu Substation in Kayin State



33/11kV, 5MVA Substation(Under Construction)
65(T)/ESE/2014-2015

Min Kyaung Kone Substation in Kachin State



66/11kV, 5MVA Substation(Under Construction)
9(T)/ESE/2015-2016



Bamauk Substation in Sagaing Division



33/11kV, 5MVA Substation(Under Construction)
111(T)/ESE/2014-2015

Nabar Switchbay Extension in Sagaing Division



33kV Switchbay Extension(Under Construction)
112(T)/ESE/2014-2015

PROJECT REFERENCES



66/11kV,20MVA Substation @ Myo Thar



33/11KV Substation Aggregate
Mining Plant @ Mon State



36 kV Switchbay extension
@ 230 kV HlaingTharyar Substation



66/11 kV Myanmar
International Port Substation



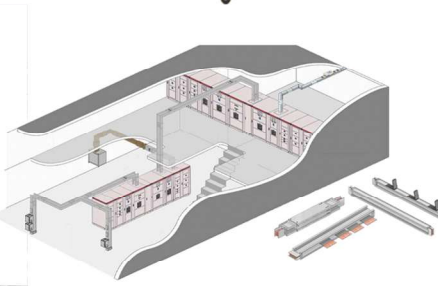
72.5 kV HGIS for Ahlone International
Port Terminal @ 230 kV Ahlone Substation



36 kV SafePlus-VMV
Foster Factory Project (Thilawa-SEZ)



230/400V Low Voltage Distribution Panels
From PUNHLAING SILOAM Project



33/0.4 KV, 3 MVA
Substation Equipment & Bus Duct
from Europe & Asia Commercial Co., Ltd.



11/0.4 KV, 500 & 800 KVA Substation
Ayarwady Shopping Mall (Patheingyi)
Form Max Myanmar Co.,Ltd.



Fuji Work (Vocational Training School)
Seogwoo Construction Co.,Ltd.
36 kV SafePlus-CMV



Kubota Factory Project
Thilawa - SEZ
36 kV SafePlus-CMV

PROJECT REFERENCES



Malikha Housing



Hilltop Condominium



Twin Centro Condominium



Time City Condominium



Centre Point Office Tower & Hotel



Mandalay Hill Resort Hotel



Orchid hotel



Sedona Hotel Phase 2



Crystal Residence



Strand Office Complex



Heritage Kempisiki Hotel Project
 36KV GIS (1Incoming + 2 Outgoing)
 Maker; ABB, Germany (Main Part)
 Country of origin ; ABB, Thailand
 (LV Control Assembly)
 33/0.4KV, 2MVA & 2.5MVA Dry Type
 Transformer Maker; ABB, Country of Origin; Korea



Harvey Handbags Factory
 33/0.4KV, 2x1250kVA Dry Type Transformer & Substation Equipments



Ayar Wun , Yadanar Housing Project

PROJECT REFERENCES

San Kaung PP Woven Bag Industry



UPS Power Wave 33, 12 SP 120 FR, 12 SP 120 FR, 200 no.



Sky Net (TGY)



UPS Power Wave 33, 12 SP 120 FR, 1x48x120AH, 48 no.

Sky Net @ Pyay



UPS Power Wave 33, 12 SP 120 FR, 1x42x120AH, 42 no.



Myanmar Carlsberg Co.,Ltd.



PCS 100, AVC 40, 300KVx2

Myan Aung Factory



UPS Power Wave 33, 12 SP 120 FR, 4x50x120AH

OUR SERVICES

- Engineering & Design
- Installation, Testing & Commissioning
- Turnkey Solution
- After Sales Services



■ ABB World Wide Service Certificates



ACTIVITIES



Staff Vacation ~ 2015



Staff Vacation ~ 2016



Activities on Donation

ACTIVITIES



Myan Energy Exhibition @ Myanmar Even Park



Myan Energy Exhibition @ Mida Ground



International Technology and Industrial Exhibition @ Tamataw Hall

ACTIVITIES



Marketing Activity Award, Winner 2016



Signing the TCA Agreement



Signing the TCA Agreement



UPS Launching Ceremony and Technical Seminars



APQ Launching Event



Technical Presentation



UPS Presentation



New Product Presentation @ APQ Co.,Ltd.

ACTIVITIES



Technical Training @ Thilawa Industrial Zone



ABB Day @ Mandalay Hill Resort 2016



Training By ABB @ YESC 2016

Training By ABB @ MOEE 2016